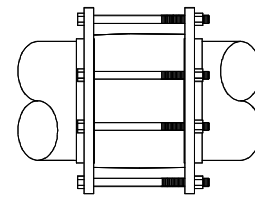
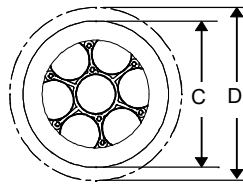
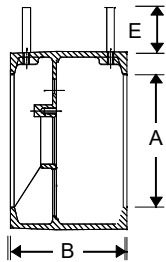


CLASS 150 WAFER



SPECIFICATIONS

PSI/Temperature Rating: 360 PSI / 275° F
Cartridge: AISI Type 304 stainless steel
 AISI Type 17-7 PH stainless steel spring
Body Material: Ductile Iron ASTM A536 GR60-40-18
Body Tappings: 1/4" NPT with P/T test valves
Assembly: Valve comes fully assembled. Pressure and Temperature port extensions are shipped loose.
Flanges: Wafer valves are compatible with ANSI B 16.5-1968 150 lb. steel flanges and ANSI B 16.1-1967 125 lb cast iron flanges.



DIMENSIONS & WEIGHTS (NOMINAL)

All dimensions are for planning purposes only and may change without notice.

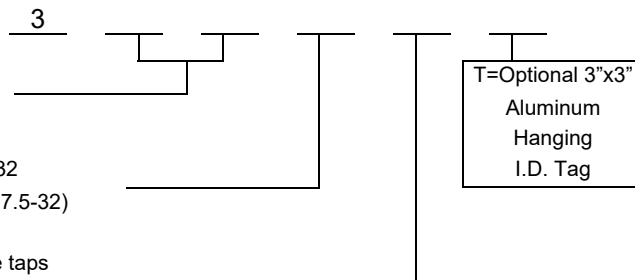
A LINE SIZE	MODEL NO.	B (+/- .03)	C (+/- .06)	D REF ONLY FLG. DIA.	E	STUDS ¹ (SUPPLIED BY GRISWOLD)		WEIGHT (LBS.)
						QTY	SIZE	
2-1/2 / 3 ²	329	6.75	4.62	7.50	5.50	4	5/8	17
4	332	7.75	6.88	9.00	5.50	8	5/8	33
6	334	7.25	8.62	11.00	5.50	8	3/4	42
8	337	7.25	10.88	13.50	5.50	8	3/4	57
10	368	8.00	13.44	16.00	5.50	12	7/8	93
12	369	8.00	16.00	19.00	5.50	12	7/8	137
14	339	8.00	17.63	21.00	5.50	12	1	177
16 ³	384	9.50	20.12	23.50	5.50	16	1	291
18	385	9.50	21.50	25.00	5.50	16	1-1/8	405
20	338	11.00	23.88	27.50	5.50	20	1-1/8	520
24	386	11.00	28.12	32.00	5.50	20	1-1/4	896

MODEL NUMBER SELECTION⁴

Select a size (2-1/2 or 3=29, 4=32, 6=34, 8=37, 10=68, 12=69, 14=39, 16=84, 18=85, 20=38, 24=86)

Select a PSID control range (STD: 1=1-20 or 4-20, 2=2-32 or 8-32, 4=4-57, 8=8-128; HI-FLOW: 3=3-18, 5=5-32, 7=7.5-32)

Insert "A" for pressure taps, "B" for pressure/temperature taps



NOTES

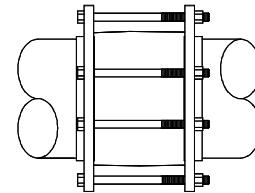
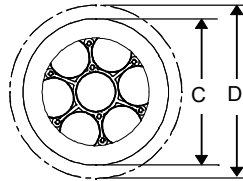
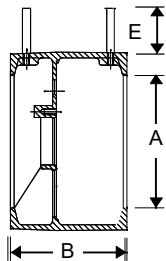
¹ Plated Steel Studs and Nuts are supplied by Griswold.
² Valve compatible with 2-1/2" and 3" ANSI flanges. Class 150 Only.
³ 16" and larger are supplied with an eyebolt for lifting.
⁴ Model no. and flow rate are indicated on label affixed to body.

CLASS 300 WAFER



SPECIFICATIONS

PSI/Temperature Rating: 500 PSI / 350° F
Cartridge: AISI Type 304 stainless steel
 AISI Type 17-7 PH stainless steel spring
Body Material: Ductile Iron, ASTM A536-65T, Class 60-45-18
Body Tappings: 1/4" NPT with P/T test valves
Assembly: Valve comes fully assembled. Pressure and Temperature extensions are shipped loose.
Flanges: Sizes 3" - 20" are compatible with ANSI B 16.5-1968 300 lb. steel flanges. Steel flanges and are also compatible with ANSI B 16.1-1967 250 lb.



DIMENSIONS & WEIGHTS (NOMINAL)

All dimensions are for planning purposes only and may change without notice.

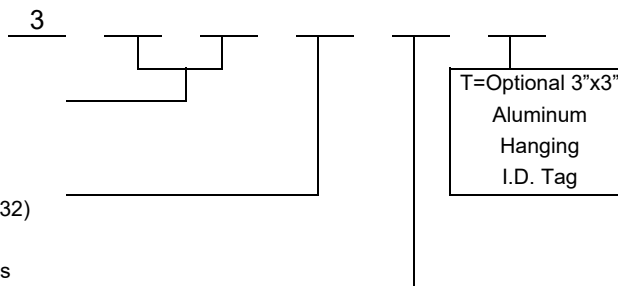
A LINE SIZE	MODEL NO.	B (+/-0.03)	C (+/-0.06)	D REF ONLY FLG. DIA.	E	STUDS ⁵ (SUPPLIED BY GRISWOLD)		WEIGHT (LBS.)
						QTY	SIZE	
3	345	6.75	5.88	8.25	5.50	8	3/4	26
4	346	7.75	7.13	10.00	5.50	8	3/4	49
6	347	7.25	9.88	12.50	5.50	12	3/4	62
8	348	7.25	12.13	15.00	5.50	12	7/8	103
10	343	8.00	14.12	17.50	5.50	16	1	161
12	344	8.00	16.50	20.50	5.50	16	1-1/8	241
14	349	8.00	19.13	23.00	5.50	20	1-1/8	364
20 ⁶	350	11.00	25.75	30.50	5.50	24	1-1/4	850

MODEL NUMBER SELECTION⁷

Select a size (3=45, 4=46, 6=47, 8=48, 10=43, 12=44, 14=49, 20=50)

Select a PSID control range (STD: 1=1-20 or 4-20, 2=2-32 or 8-32, 4=4-57, 8=8-128; HI-FLOW: 3=3-18, 5=5-32, 7=7.5-32)

Insert "A" for pressure taps, "B" for pressure/temperature taps



NOTES

- ⁵ Plated Steel Studs and Nuts are supplied by Griswold.
- ⁶ 20" and larger are supplied with an eyebolt for lifting
- ⁷ Model no. and flow rate are indicated on label affixed to body

This specification © 2021 Griswold Controls

1700 Barranca Parkway, Irvine, CA 92606
 (949) 559-6000 Fax (949) 559-6088
 www.GriswoldControls.com

FLOW RATE TABLES PER TYPE OF CARTRIDGE (+/-5%)

TYPE OF CARTRIDGE:			STANDARD FLOW				
LINE SIZE	MODEL NO. CLASS 150	MODEL NO. CLASS 300	CONTROL RANGE (PSID)	1-20	2-32	4-57	8-128
			MAX. PRES. DIFF. (PSI)	20	32	57	128
			HEAD LOSS IN FEET ⁸	3.0	7.4	13.4	30.0
			MIN. AVAILABLE GPM	14	17.5	23.33	35
			GPM INCREMENTS	2.0	2.5	3.33	5.0
2-1/2 ⁹ or 3	329	345	Maximum GPM	60	75	100	150
4	332	346	Maximum GPM	120	150	200	300
6	334	347	Maximum GPM	240	300	400	600
8	337	348	Maximum GPM	420	525	700	1,050
10	368	343	Maximum GPM	660	825	1,100	1,650
12	369	344	Maximum GPM	900	1,125	1,500	2,250
14	339	349	Maximum GPM	1,140	1,425	1,900	2,850
16	384	N/A	Maximum GPM	1,440	1,800	2,400	3,600
18	385	N/A	Maximum GPM	1,860	2,325	3,100	4,650
20	338	350	Maximum GPM	2,220	2,775	3,700	5,550
24	386	N/A	Maximum GPM	3,300	4,125	5,500	8,250

TYPE OF CARTRIDGE:			STANDARD FLOW HIGH CAPACITY		
LINE SIZE	MODEL NO. CLASS 150	MODEL NO. CLASS 300	NOMINAL CONTROL RANGE (PSID)	4-20	8-32
			MAX. PRES. DIFF. (PSI)	20	32
			HEAD LOSS IN FEET ⁸	9.2	18.4
			GPM INCREMENTS	20.0	25.0
			Minimum GPM	90	110
Maximum GPM	130	160			

NOTES

⁸ Head Loss in Feet is provided for pump head calculations. (1 PSI = 2.307 Feet of Water)

⁹ 2-1/2" is Class 150 only.

TYPE OF CARTRIDGE:			HI - FLOW					
LINE SIZE	MODEL NO. CLASS 150	MODEL NO. CLASS 300	CONTROL RANGE (PSID)	3-18 (LOW INCREMENTS)	3-18 (NO INCREMENTS)	5-32 (LOW INCREMENTS)	5-32 (NO INCREMENTS)	7.5-32 (NO INCREMENTS)
			MAX. PRES. DIFF. (PSI)	18	18	32	32	32
			HEAD LOSS IN FEET ¹⁰	5.8	5.8	11.5	11.5	17.5
			GPM INCREMENTS	2.0	SEE ACTUAL FLOWS	2.5	SEE ACTUAL FLOWS	SEE ACTUAL FLOWS
2-1/2 ⁹ or 3	329	345	Minimum GPM	N/A	N/A	N/A	N/A	N/A
			Maximum GPM	N/A	N/A	N/A	N/A	N/A
4	332	346	Minimum GPM	114	200	152.5	335, 360,	500, 600
			Maximum GPM	160		275	400	
6	334	347	Minimum GPM	114	400	152.5	735, 760,	1,000, 1,200
			Maximum GPM	360		675	800	
8	337	348	Minimum GPM	114	700	152.5	1,335, 1,360,	1,800, 2,100
			Maximum GPM	660		1,275	1,400	
10	368	343	Minimum GPM	114	1,100	152.5	2,135, 2,160,	2,400, 3,000,
			Maximum GPM	1,060		2,075	2,200	3,300
12	369	344	Minimum GPM	114	1,500	152.5	2,935, 2,960,	3,500, 3,900
			Maximum GPM	1,460		2,875	3,000	4,500
14	339	349	Minimum GPM	114	1,900	152.5	3,735, 3,760,	4,500, 5,100
			Maximum GPM	1,860		3,675	3,800	5,700
16	384	N/A	Minimum GPM	114	2,400	152.5	4,735, 4,760,	5,400, 6,000
			Maximum GPM	2,360		4,675	4,800	6,600, 7,200
18	385	N/A	Minimum GPM	114	3,100	152.5	6,135, 6,160,	6,900, 7,500, 8,100
			Maximum GPM	3,060		6,075	6,200	8,700, 9,300
20	338	350	Minimum GPM	114	3,700	152.5	7,335, 7,360,	8,700, 9,300, 9,900,
			Maximum GPM	3,660		7,275	7,400	10,500, 11,100
24	386	N/A	Minimum GPM	114	5,500	152.5	10,935, 10,960,	13,200, 14,100
			Maximum GPM	5,460		10,875	11,000	15,300, 16,500

NOTES

¹⁰ Head Loss in Feet is provided for pump head calculations. (1 PSI = 2.307 Feet of Water)