

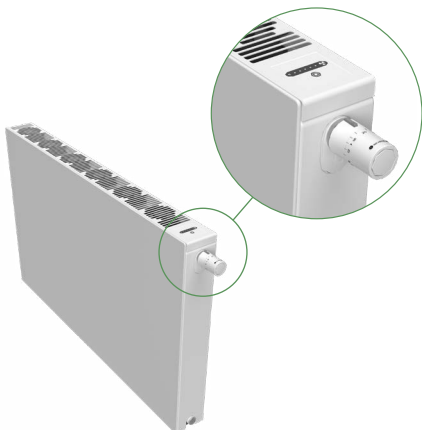
# **RADIK V-POWER**

Panel radiator suitable for heat pumps



# RADIK V-POWER

## Panel radiator suitable for heat pumps



Construction today places emphasis on the energy efficiency of building heating systems. The trend we are seeing is towards use of modern and innovative low-temperature heat sources, which mainly include heat pumps. The greatest advantage of low-temperature heating is its efficiency in using lower operating temperatures.

The innovative **RADIK V-POWER** panel radiator ensures efficient heating in low-temperature heating systems. Its unique nature lies in the integration of fans and an autonomous controller directly into the radiator. It can be used without ventilation or at one of five levels of intensity of forced convection. The integrated fans **increase the heat output of the radiator by up to 60%**.

The new **RADIK V-POWER** panel radiator can also be used during the summer months. In passive cooling mode, the radiator is able to work with cooler water, which some types of heat pumps can supply to the heating system to cool the building. The **RADIK V-POWER** is supplied in type 22 with heights of 524, 624 and 924 mm and in standard lengths from 400 to 2 000 mm.

The unique design of the separate module with fans and integrated regulation allows for **retrofitting on older types of KORADO radiators** with the same dimensions as those which the **RADIK V-POWER** is supplied in. This will in particular be appreciated by heat pump users who, after replacing their gas or fossil fuel boiler, need to achieve increased radiator output at lower water temperatures.



Suitable for heat pumps.



It contributes to savings thanks to low temperature operation.



Integrated fans increase the output by up to 60%.



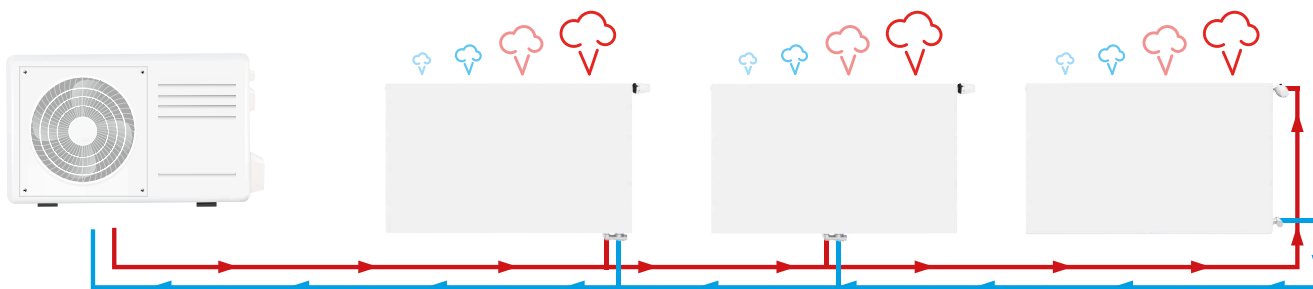
Heating and passive cooling.



Module for retrofitting of older types of KORADO radiators.



Very silent operation, suited for sleeping.



- Possibility of adjusting the heat output of the radiator according to user requirements.
- Automatic control of heating or passive cooling of the module with fans thanks to temperature sensors monitoring the temperature of the radiator and the ambient temperature.
- The universal design of the radiator allows for a variable method of connection.
- Maximum safety thanks to 12 V voltage.
- Efficient use of the thermal energy emitted by the radiator thanks to low input temperatures ensures energy savings and thermal comfort.
- Modern radiator design suitable for all types of interiors.
- Low power consumption from 4 to 15 W.

# RADIK V-POWER

## Technical parameters



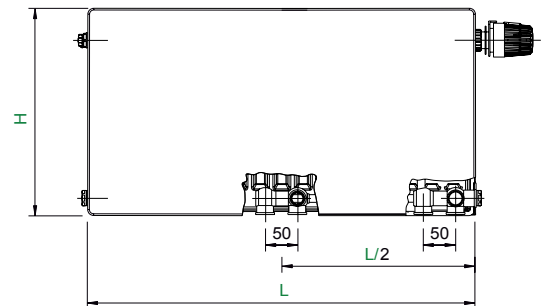
### Description

The **RADIK V-POWER** model is an innovative panel radiator in the PLAN version with a flat front panel and integrated module with fans which increase the heat output by up to 60%. Its design is intended for low-temperature heating systems, most often heat pumps. It allows for connection to the heating system from the bottom middle, bottom right, left or right side. Two upper and lower fixing hangers are welded onto the back of the radiator. Radiators with a length of 1 800 mm or more have six fixing hangers welded onto them.

### Technical data

Height H	524, 624, 924 mm
Length L	400, 500, 600, 700, 800, 900, 1000, 1100, 1200, 1400, 1600, 1800, 2000 mm
Depth B Type 22	102 mm
Connecting pitch	50 mm
Connecting thread	8 x G 1/2 inside
Highest allowed working pressure	10 bar
Operating temperature	17 ÷ 60 °C
Radiator connection	bottom middle, bottom right, left or right side connection

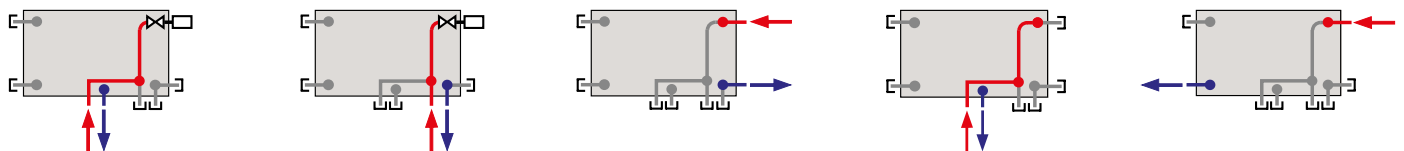
### Overview of types



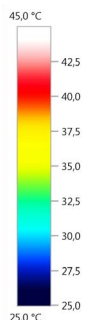
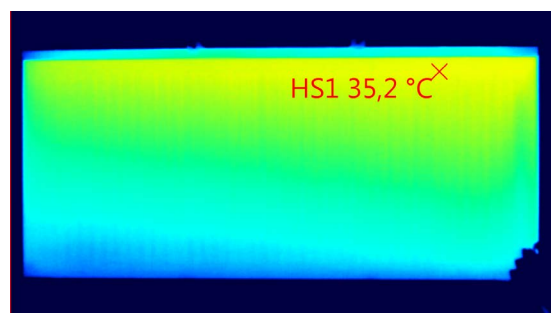
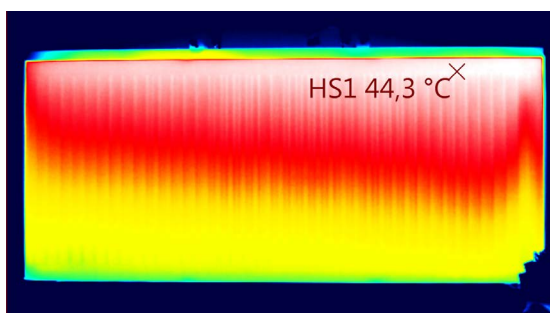
Type 22 V-POWER



### Some of the ways of connection to the heating system.



### All parameters are laboratory-tested.



# RADIK V-POWER SET

Solution for additional installation

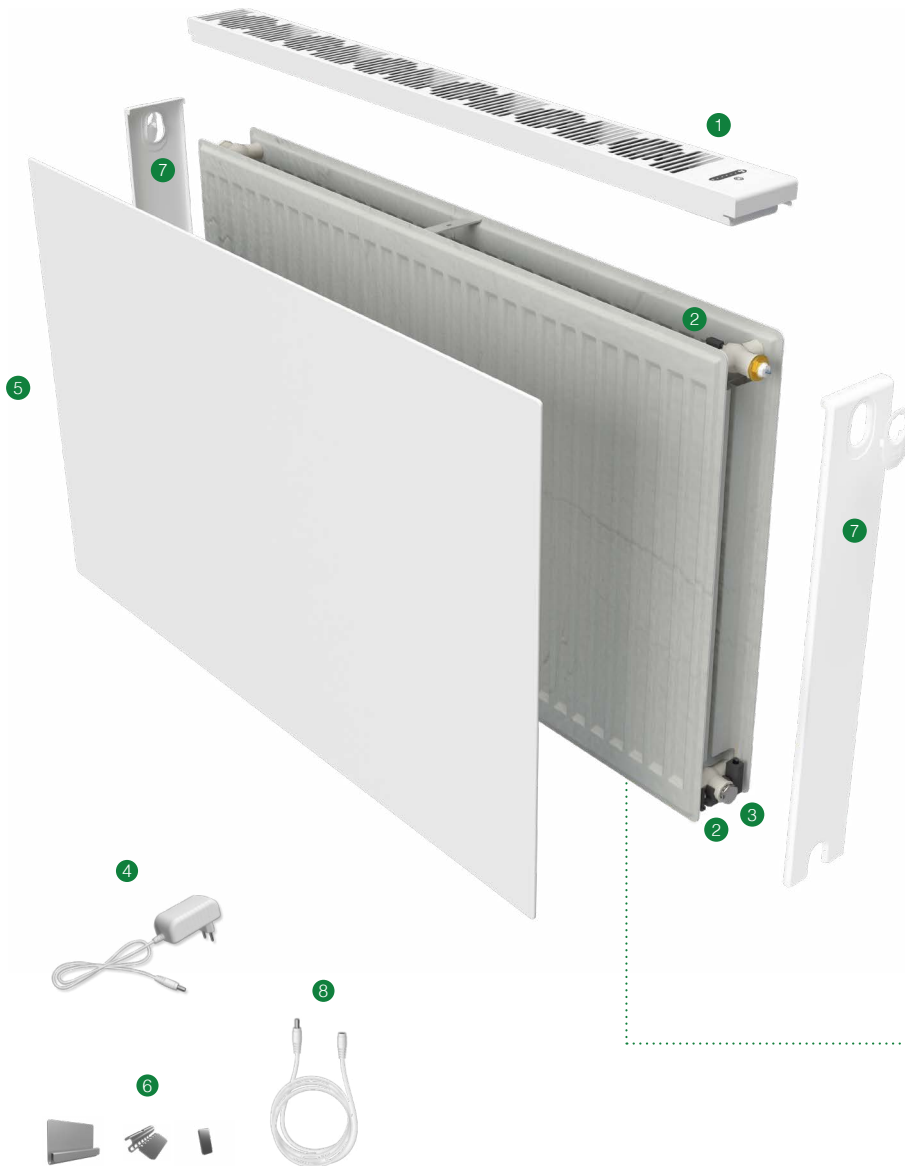
The **RADIK V-POWER SET** is a kit for retrofitting to radiators. It is also compatible with older KORADO type 22 radiators up to a length of 2 000 mm. This set can be used by all users who have replaced their heat source. The kit contains all of the components needed for installation and operation.

## The set contains:

- 1 ventilation unit
- 2 temperature sensors
- 3 power supply connector
- 4 power supply adapter – 1,2 m
- 5 flat front panel
- 6 accessory for mounting on the radiator

## Optional (recommended) accessories:

- 7 side panels
- 8 extension cable



Installation  
on the existing  
radiator.



Various colour options are available for new RADIK V-POWER radiators and SETS. You can choose from KORADO as well as RAL colour card.

# RADIK V-POWER

## HEATING AND COOLING OUTPUT Q [W] FOR HEAT CARRYING WATER ACCORDING TO EN 16430

Type 22 V-POWER										
Height H [mm]		524			624			924		
Length L [mm]	t <sub>1</sub> /t <sub>2</sub> /t <sub>i</sub> [°C]	Fan speed level								
		Static	Comfort	Dynamic	Static	Comfort	Dynamic	Static	Comfort	Dynamic
400	55/45/20	271	358	391	314	408	446	436	540	589
	45/35/20	163	225	246	189	257	281	262	341	373
	40/35/20	138	193	211	160	221	241	222	294	321
	35/30/20	90	131	144	105	150	164	145	201	219
	17/19/28	34	43	51	39	46	55	46	55	65
18/20/28	29	38	45	33	40	48	39	48	57	
500	55/45/20	338	448	489	392	510	557	545	675	737
	45/35/20	204	281	308	236	321	351	328	427	466
	40/35/20	172	242	264	200	276	301	277	367	401
	35/30/20	113	164	180	131	188	205	182	251	274
	17/19/28	43	54	64	49	58	69	58	69	82
18/20/28	36	47	56	41	51	60	49	60	72	
600	55/45/20	406	537	587	471	612	669	654	809	884
	45/35/20	244	338	369	283	386	421	393	512	559
	40/35/20	207	290	317	239	331	362	333	441	481
	35/30/20	136	197	216	157	226	246	218	301	329
	17/19/28	52	64	76	58	69	82	69	82	98
18/20/28	43	56	67	49	61	72	59	72	86	
700	55/45/20	474	627	685	549	714	780	764	944	1032
	45/35/20	285	394	431	330	450	491	459	598	653
	40/35/20	241	338	370	279	386	422	388	514	561
	35/30/20	158	230	251	183	263	287	254	352	384
	17/19/28	60	75	89	68	81	96	81	96	114
18/20/28	50	66	78	57	71	84	69	84	100	
800	55/45/20	542	716	783	628	816	892	873	1079	1179
	45/35/20	326	450	492	378	514	562	524	683	746
	40/35/20	276	386	422	319	441	482	443	587	642
	35/30/20	181	263	287	209	301	329	291	402	439
	17/19/28	69	86	102	78	92	110	92	110	130
18/20/28	58	75	89	65	81	96	78	96	114	
900	55/45/20	609	806	881	706	918	1003	982	1214	1326
	45/35/20	367	506	554	425	578	632	590	768	839
	40/35/20	310	435	475	359	497	543	499	661	722
	35/30/20	203	296	323	236	338	370	327	452	494
	17/19/28	77	96	114	87	104	123	104	123	147
18/20/28	65	85	100	73	91	108	88	108	129	
1000	55/45/20	677	895	979	785	1020	1115	1091	1349	1474
	45/35/20	407	563	615	472	643	702	656	854	932
	40/35/20	344	483	528	399	552	603	554	734	802
	35/30/20	226	329	359	262	376	411	363	502	549
	17/19/28	86	107	127	97	115	137	115	137	163
18/20/28	72	94	112	82	101	120	98	120	143	
1100	55/45/20	745	985	1076	863	1123	1226	1200	1484	1621
	45/35/20	448	619	677	519	707	772	721	939	1026
	40/35/20	379	531	581	439	607	663	610	808	882
	35/30/20	249	361	395	288	414	452	400	552	603
	17/19/28	95	118	140	107	127	151	127	151	179
18/20/28	79	103	123	90	111	132	108	132	157	
1200	55/45/20	812	1074	1174	942	1225	1338	1309	1619	1768
	45/35/20	489	675	738	566	771	842	787	1024	1119
	40/35/20	413	580	634	479	662	723	665	881	962
	35/30/20	271	394	431	314	451	493	436	603	658
	17/19/28	103	128	152	116	138	164	138	164	196
18/20/28	86	113	134	98	121	144	118	144	172	
1400	55/45/20	948	1253	1370	1098	1429	1561	1527	1889	2063
	45/35/20	570	788	861	661	900	983	918	1195	1305
	40/35/20	482	676	739	559	773	844	776	1028	1123
	35/30/20	316	460	503	366	526	575	509	703	768
	17/19/28	120	150	178	136	161	192	161	192	228
18/20/28	101	132	156	114	141	169	137	168	200	
1600	55/45/20	1083	1432	1566	1255	1633	1784	1745	2159	2358
	45/35/20	652	900	984	755	1028	1123	1049	1366	1492
	40/35/20	551	773	845	639	883	965	887	1175	1283
	35/30/20	362	526	575	419	601	657	581	803	878
	17/19/28	138	171	203	155	184	219	184	219	261
18/20/28	115	150	179	131	162	193	157	192	229	
1800	55/45/20	1218	1611	1761	1412	1837	2007	1963	2428	2652
	45/35/20	733	1013	1107	849	1157	1264	1180	1537	1678
	40/35/20	620	869	950	718	993	1085	998	1322	1444
	35/30/20	407	591	647	471	677	739	654	904	987
	17/19/28	155	193	229	175	207	247	207	247	293
18/20/28	130	169	201	147	182	217	176	216	257	
2000	55/45/20	1354	1790	1957	1569	2041	2230	2181	2698	2947
	45/35/20	814	1126	1230	944	1285	1404	1311	1707	1865
	40/35/20	689	966	1056	798	1104	1206	1109	1468	1604
	35/30/20	452	657	718	524	752	821	727	1004	1097
	17/19/28	172	214	254	194	230	274	230	274	326
18/20/28	144	188	223	163	202	241	196	240	286	



 **KORADO**®

**KORADO, a. s.**  
Bří Hubálků 869  
560 02 Česká Třebová  
Czech Republic

e-mail: [info@korado.cz](mailto:info@korado.cz)  
[www.korado.com](http://www.korado.com)

Ev. No.: 04/23.122.0 EN